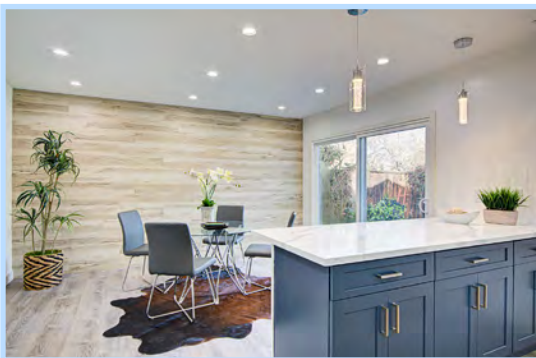


815 COFFEY COURT, SAN JOSE



NEWLY REMODELED BLOSSOM VALLEY RANCH!

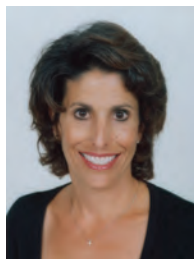
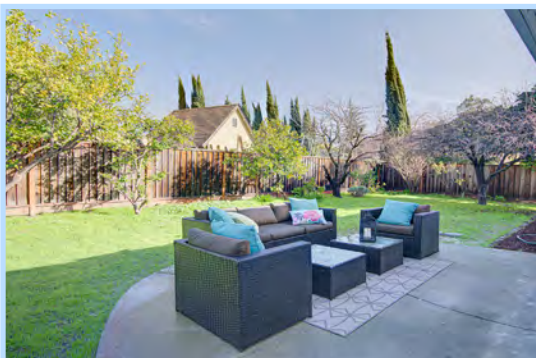
Spectacular ranch style home in the highly coveted neighborhood of Blossom Valley. You won't want to miss out on this sweet, bright and fresh home that is ready for the new owner to move right in. Newer custom kitchen with large island, ample storage, newer appliances, modern lighting. Newer bathrooms, flooring, paint, windows, fixtures and more. Enjoy several fruit trees in the private yard. This home is situated on a court. Conveniently located off Hwy 85 & 87, minutes to downtown San Jose, SJC Airport, Blossom Hill Light Rail Station, Oakridge Mall, NobHill, Target, Kaiser, Good Samaritan Hospital, Cahalan Park, Allen at Steinbeck Elementary, Castillero Middle School, Gunderson Highschool, Almaden Parents Preschool.



**4 Bedrooms • 2 Bathrooms • 1,325 SqFt •
Lot 6,307 SqFt • Built 1975 • MLS# 323000041**

*For more photos and info:
815CoffeyCourt.com*

\$1,250,000



Jennifer Moore

707-319-1933

jmoore@coldwellbanker.com

DRE# 01329293



**COLDWELL BANKER
SOLANO PACIFIC**



JENNIFERMOORETEAM.COM

THIS INFORMATION IS DEEMED RELIABLE BUT IS NOT VERIFIED. EACH OFFICE IS INDEPENDENTLY OWNED AND OPERATED.

815 COFFEY COURT, SAN JOSE



THIS INFORMATION IS DEEMED RELIABLE BUT IS NOT VERIFIED. EACH OFFICE IS INDEPENDENTLY OWNED AND OPERATED.